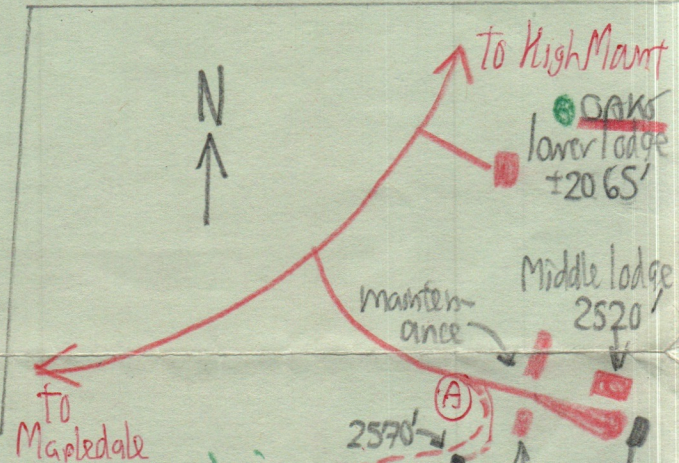


Site	IP	DP	DE	Take	Map on (Rich Paris or Sft Contar) map
(A)	29.32	0.00	0	2520	2520'
(B)	28.92	0.40	364	2884	2800'
(C)	28.88	0.44	400	2920	2875'
(D)	28.70	0.62	564	3084	3090'
(E)	28.60	0.72	654	3175	—
(F)	± 28.55	0.77	700	3220	—
(G)	28.40	0.92	836	3356	—
(H)	28.32	1.00	909	3429	3429'
(I)	28.42	0.90	818	3338	—
(A)	29.34	-0.02			2520'

Hike led by MK on 6/9/96 **202-26**
 to see 1^o on ridge, following MK's 1^o lecture in the Lodge at ±2065-foot level.

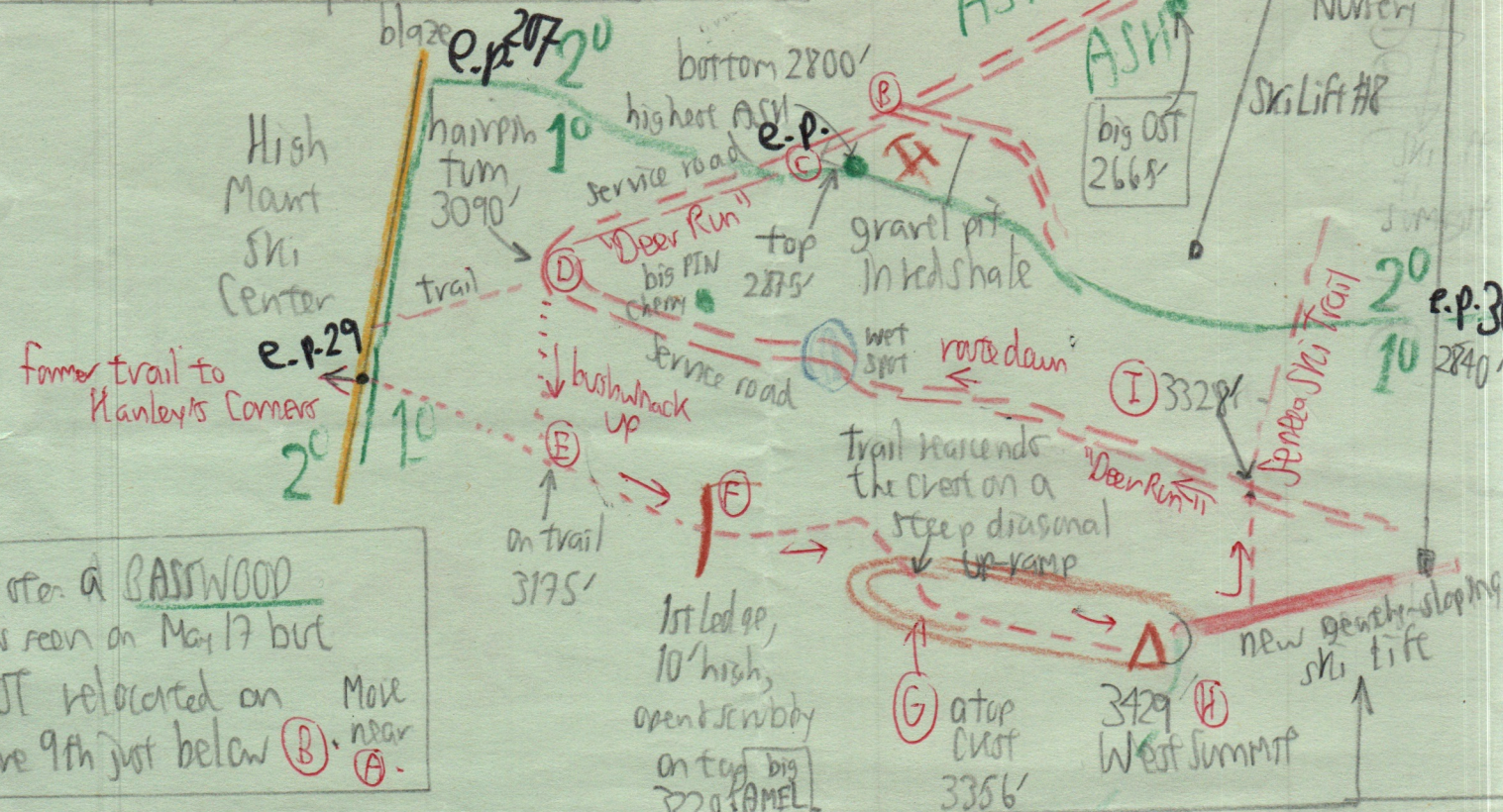
Belle Ayr

Preview on 5/17/96, with Rich Paris, who brought a detailed 5-ft. Contar map of the Belle Ayr Ski Center.



Rate: $\frac{3429' - 2520'}{29.32'' - 28.32''} = \frac{909'}{1.000''} = 0.909$

(J)	29.16	0.16	115	2665	—
-----	-------	------	-----	------	---



Note: a BASSWOOD was seen on May 17 but NOT relocated on June 9th just below (B). Move near (A).

About 2 1/2 acres cleared off of 1^o in 1995? for the new gench-sloping ski lift. ±1100' long x 100 to 125' wide.